

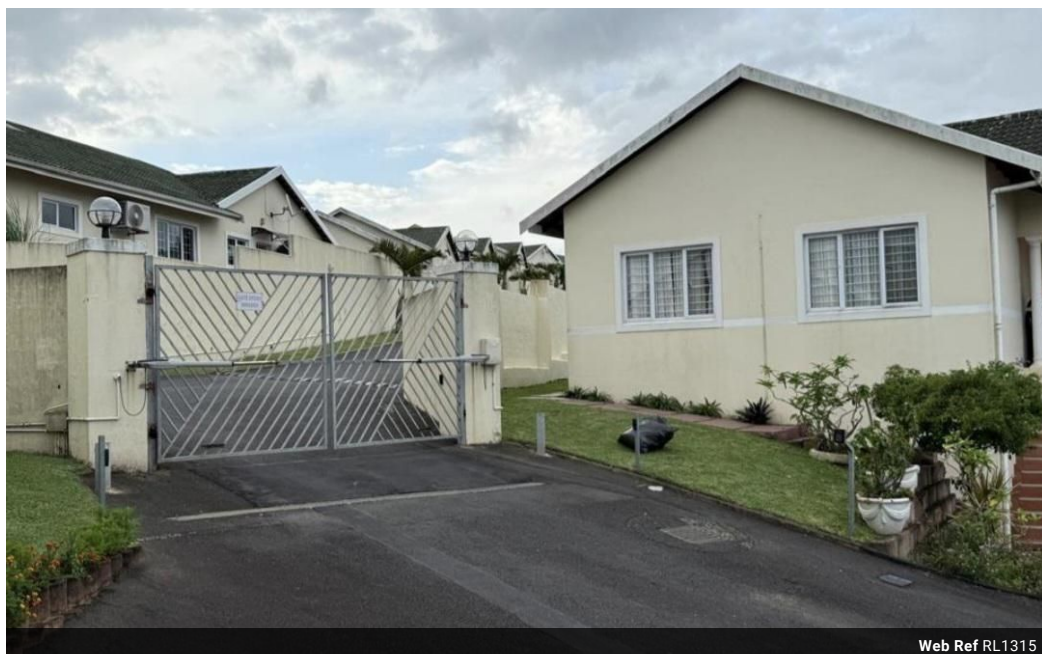


Nicole Ryan
0635092475
nicole@readprop.co.za

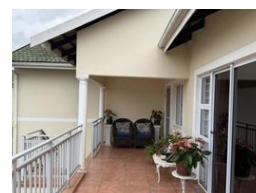
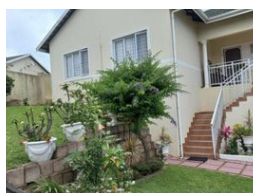
Contact Head Office

031 0014195

22 Park Sqaure, Umhlanga Rocks, Durban



Web Ref RL1315



R2,395,000

3 2 6

Monthly Bond Repayment R24,314.73

Calculated over 20 years at 10.75% with no deposit.

Transfer Costs R105,152.00 **Bond Costs** R36,530.00

These calculations are only a guide. Please ask your conveyancer for exact calculations.

Read Prop - Stunning 3 Bedroom in Mount Edgecombe

Looking for a house to call home?

Whether you're newly weds looking to establish your lives, or a family looking to settle in & spend your happy days or you're in need of a cozy space to spend your retirement, this one's for you!

This charming freestanding home is situated in the heat of Mt Edgecombe, in a well secured estate; in a peaceful neighbourhood. Being 1 out of 4 homes in the estate of the largest size, here's what else this beautiful space has to offer:

Having 3 incredibly spacious bedrooms with fitted built-ins, 1 bedroom of which includes an en-suite as well. It's semi-furnished kitchen holds plenty of space to fit a double door fridge, a washing machine & a dishwasher. This kitchen features granite countertops & additional cupboard space in the passageway for all your additional storage needs.

It's...

Features

Interior

Bedrooms	3
Bathrooms	2
Kitchens	1
Recep. Rooms	2
Furnished	Yes

Exterior

Garages	6
Security	No
Pool	No
Views	True

Sizes

Floor Size	155m ²
------------	-------------------